



# HONDA

## INSTALLATION INSTRUCTIONS

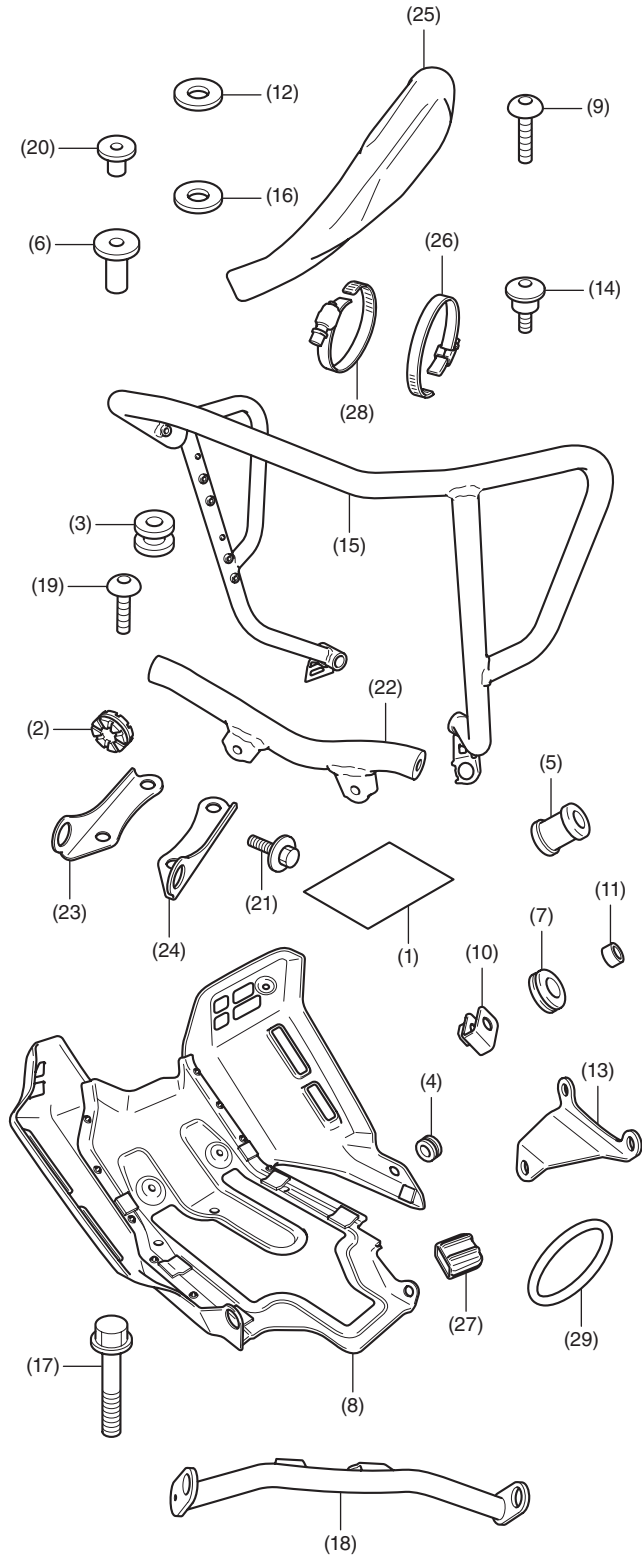
Accessory  
**FRONT SIDE PIPE & SKID PLATE**  
 P/N 08P70-MKK-D00

Application  
**CRF1000A/D**

Publication No.  
**MII**  
 Issue Date  
**November 2017**

**Honda Dealer: Please give a copy of these instructions to your customer.**

### PARTS LIST



No.	Description	Qty
(1)	URL paper	1
(2)	Rubber (grooved)	2
(3)	Cushion	2
(4)	Rubber (small)	1
(5)	Rubber (large)	2
(6)	Flange collar (large)	2
(7)	Grommet (large)	2
(8)	Skid plate	1
(9)	8 mm bolt	2
(10)	Clip nut	2
(11)	Collar	2
(12)	Washer (Silver)	2
(13)	Right skid plate stay	1
(14)	6 mm screw (stepped)	1
(15)	Front side pipe	1
(16)	Washer (Black)	2
(17)	8 mm flange bolt	2
(18)	Front side pipe stay	1
(19)	6 mm screw	2
(20)	Flange collar (small)	4
(21)	6 mm bolt	4
(22)	Lower cross pipe	1
(23)	Right lower stay	1
(24)	Left lower stay	1
(25)	Exhaust pipe cover	1
(26)	Band (large)	1
(27)	Protector rubber	1
(28)	Band (small)	1
(29)	Gasket	2

### TOOLS REQUIRED

Socket (10 and 12 mm)  
 Ratchet  
 Box-end wrench (12 mm)  
 Hex wrench (5 mm)  
 Phillips® screwdriver  
 Torque wrench

## TORQUE CHART

Tighten all screws, bolts, and nuts to their specified torque values. Refer to the Service Manual for the torque values of the removed parts.

Item	N-m	kgf-m	lbf-ft
6 mm screw	9	0.9	6.6
6 mm bolt	12	1.2	9
8 mm bolt	22	2.2	16
8 mm flange bolt	27	2.8	20

## INSTALLATION

### ▲ CAUTION

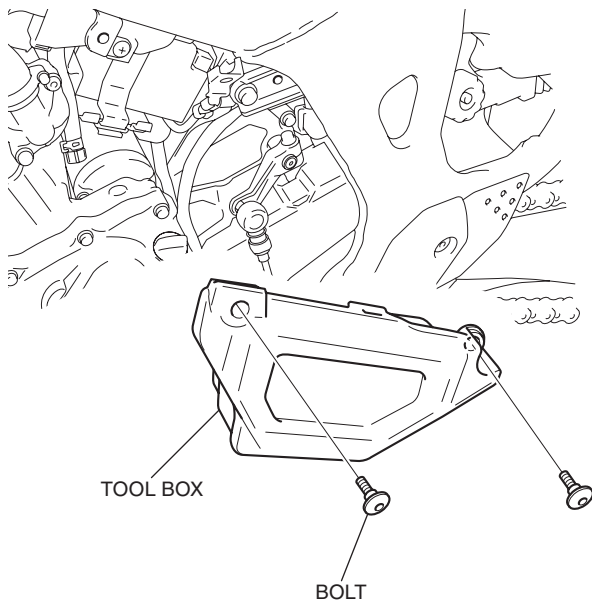
- To prevent burns, allow the engine, exhaust system, radiator, etc., to cool before installing the accessory.

### NOTE:

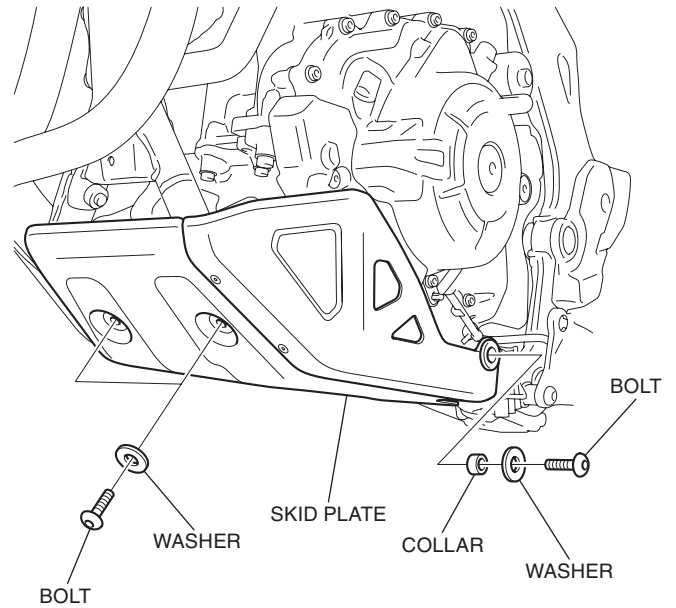
- Disconnect the negative (-) cable from the battery before installing this accessory.
- The memories of the clock will be erased when you disconnect the battery. Reset the memories after reconnecting the battery.

1. Remove the tool box and disconnect the negative (-) cable of the battery.

<Left side>

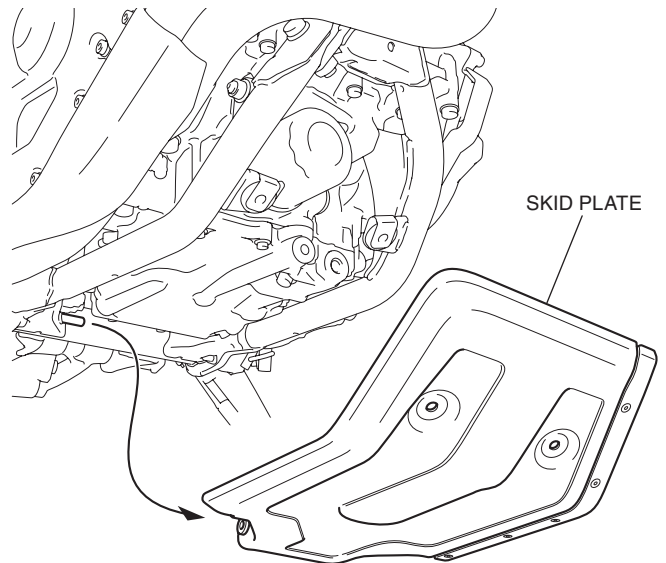


2. Remove the parts as shown.

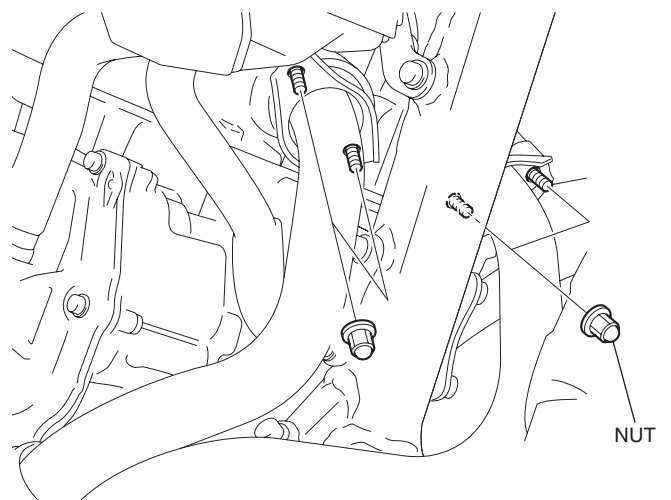


3. Remove the skid plate as shown.

<Right side>

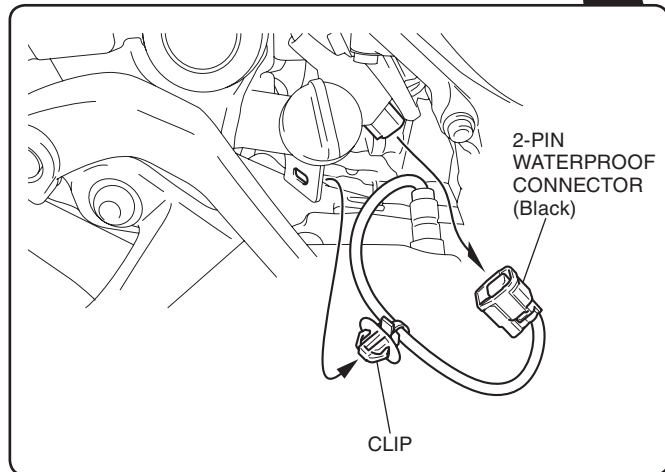
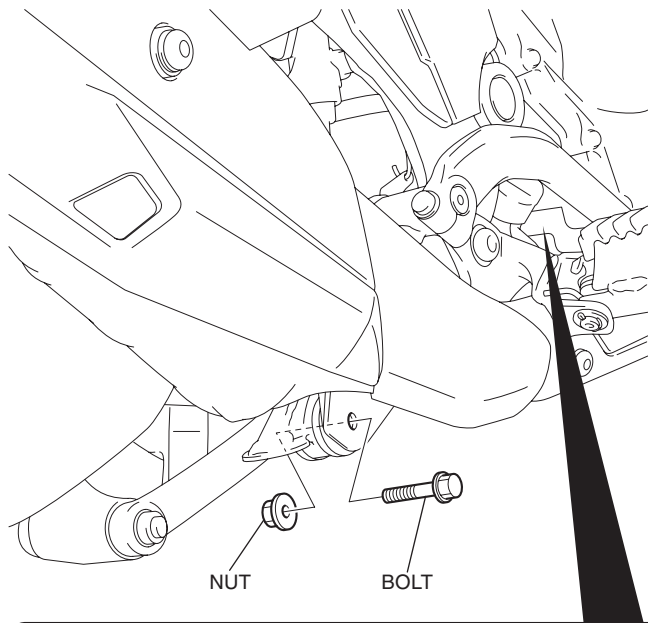


4. Remove the nuts as shown.



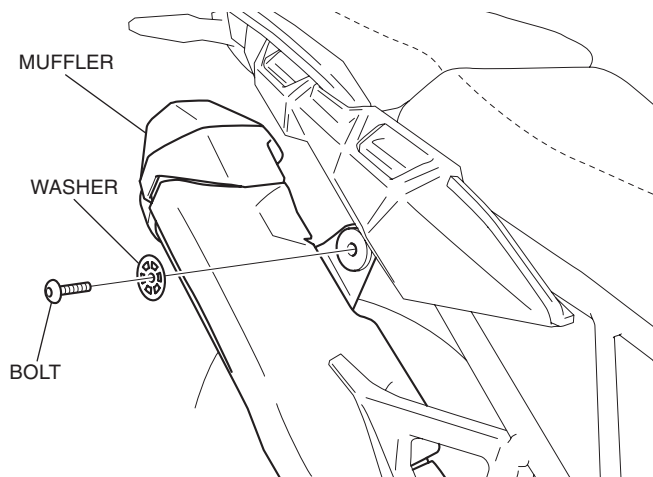
5. Remove the parts as shown.

<Right side>

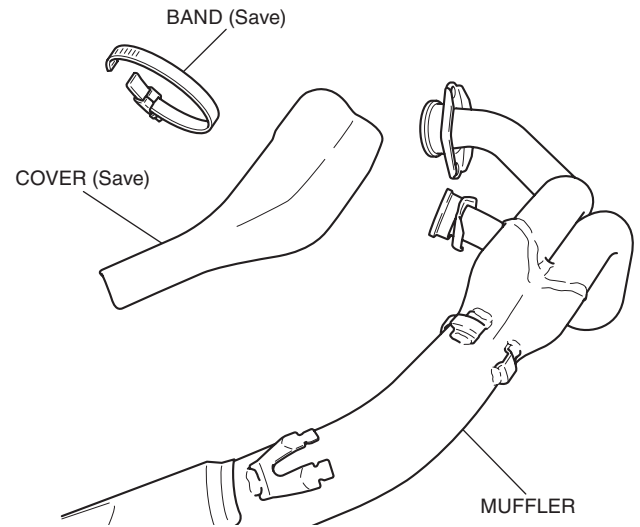


6. Remove the bolt, and then remove the muffler as shown.

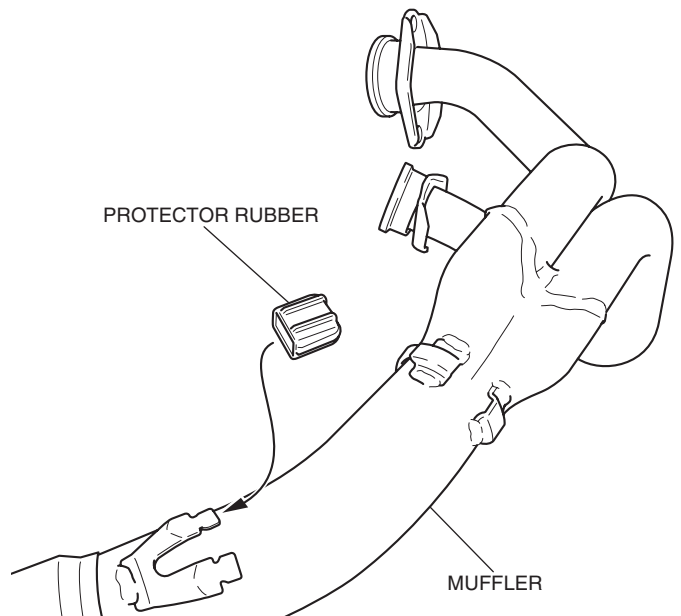
<Right side>



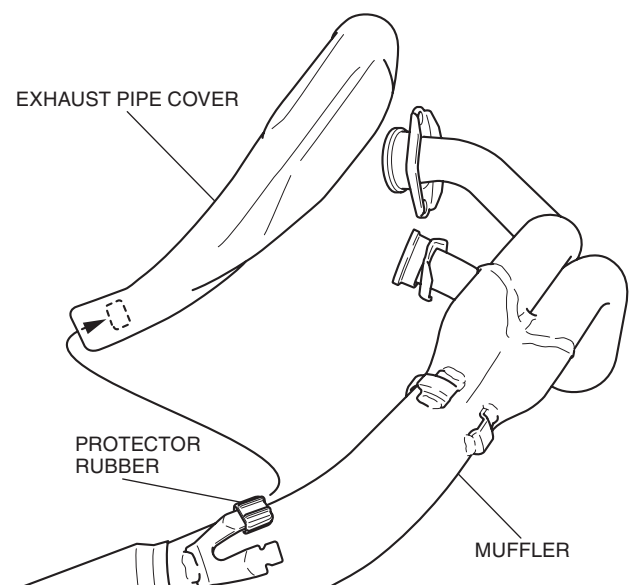
7. Remove the band and cover as shown.



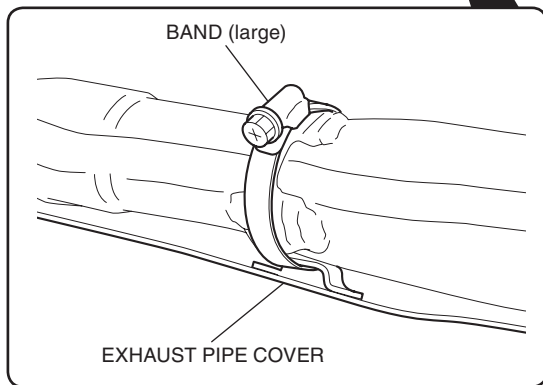
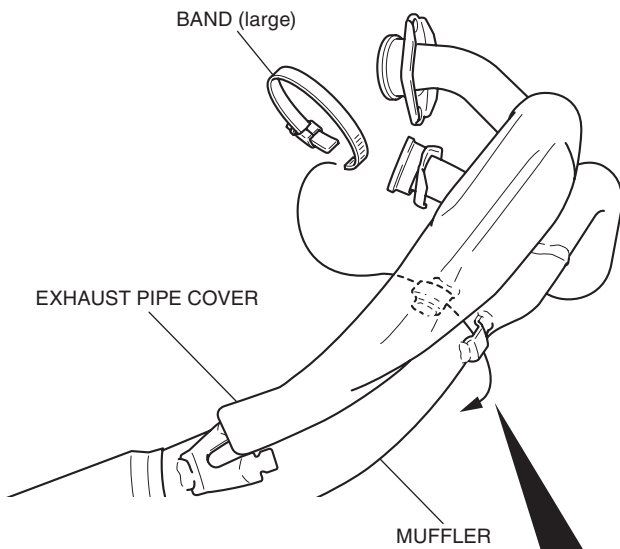
8. Install the protector rubber as shown.



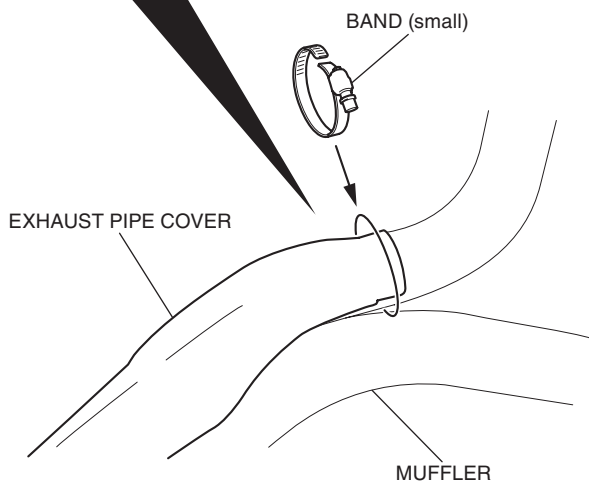
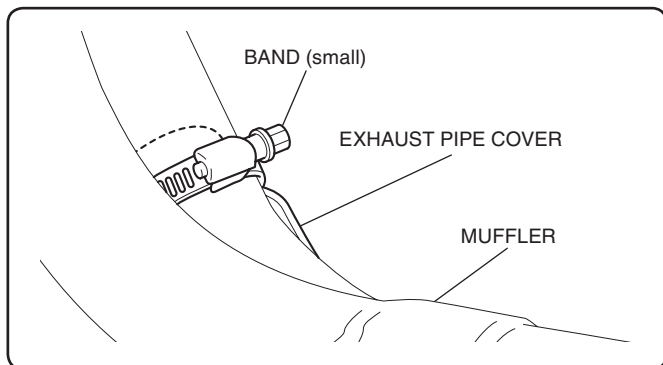
9. Install the exhaust pipe cover as shown.



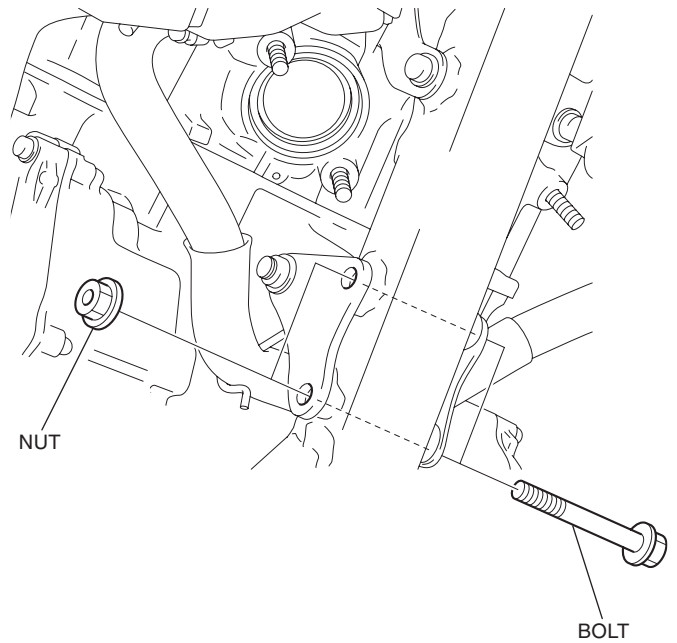
10. Install the band (large) as shown.



11. Install the band (small) as shown.

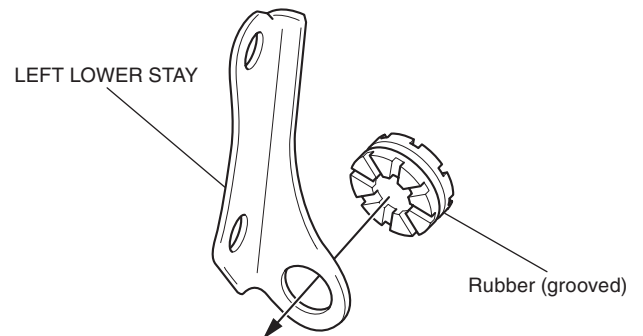


12. Remove the parts as shown.



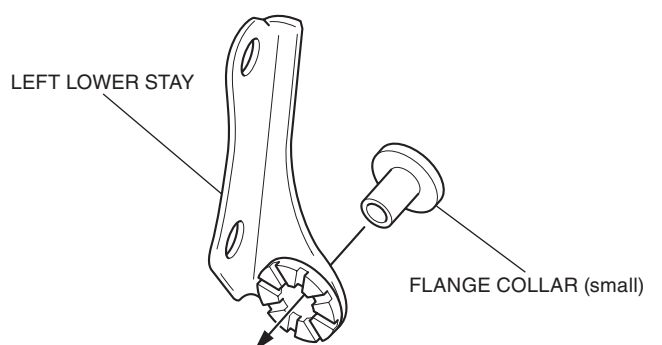
13. Install the rubber as shown.

- Repeat on the right side.

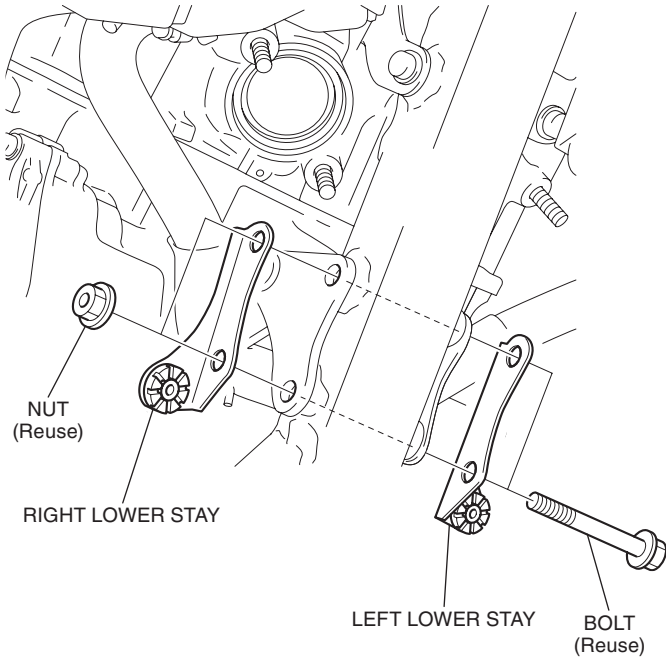


14. Install the flange collar (small) as shown.

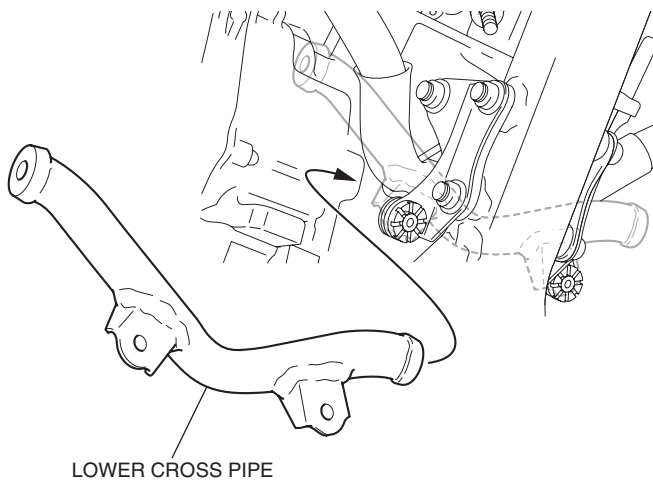
- Repeat on the right side.



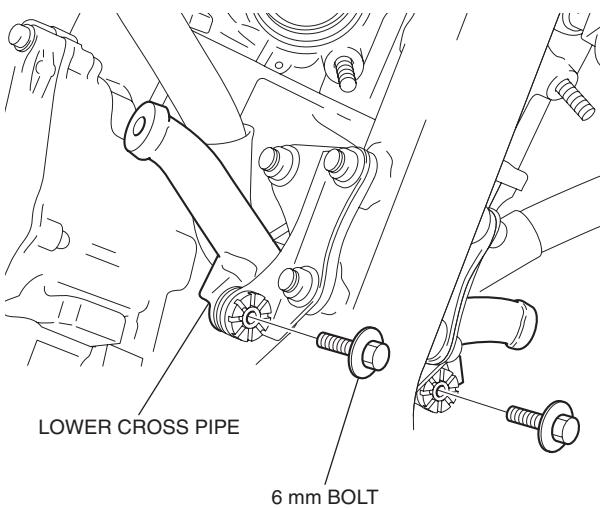
15. Install the right and left lower stay as shown.



16. Pass the lower cross pipe as shown.



17. Install the lower cross pipe as shown.

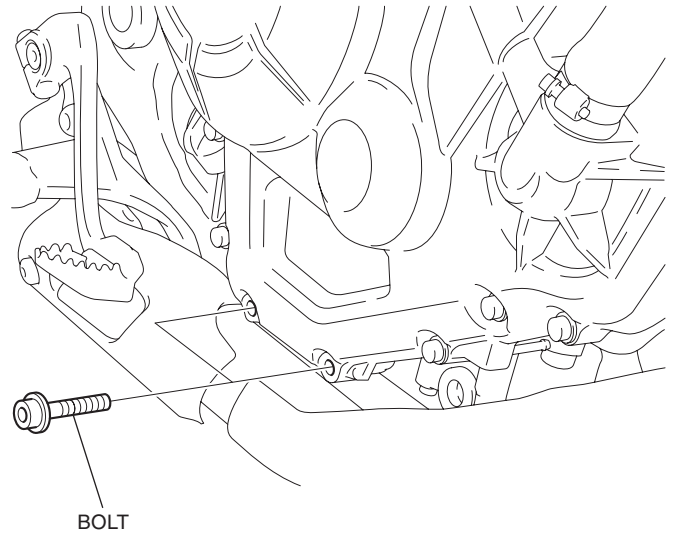


18. Install the muffler in the reverse order of removal.

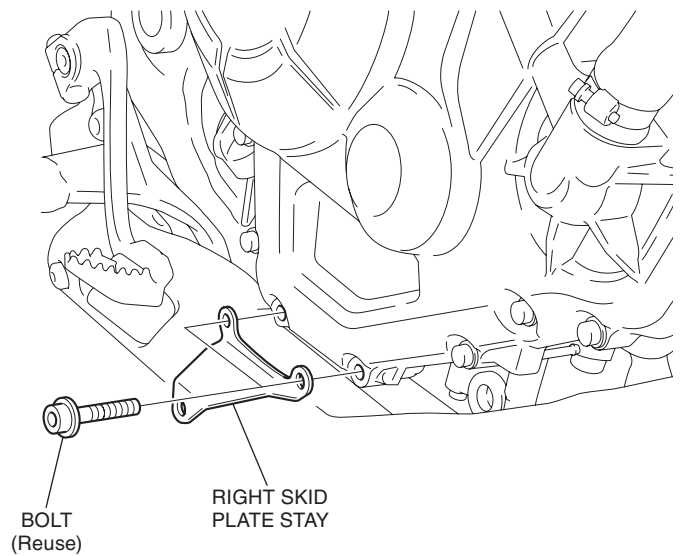
- Always replace by a new gasket.
- Install the clip and connector in the reverse order of removal.

19. Remove the bolts as shown.

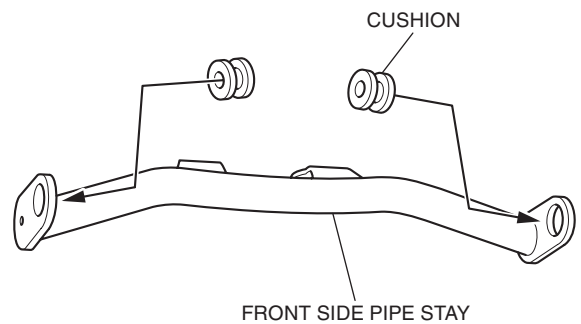
<Right side>



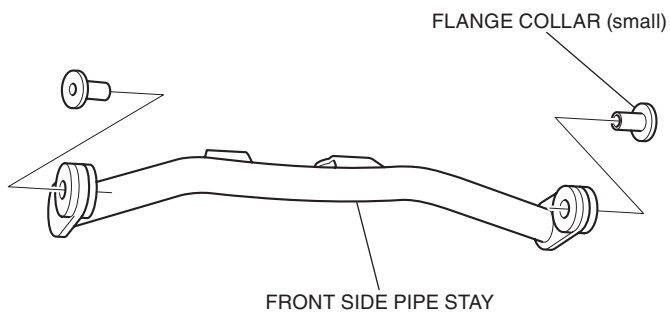
20. Install the right skid plate stay as shown.



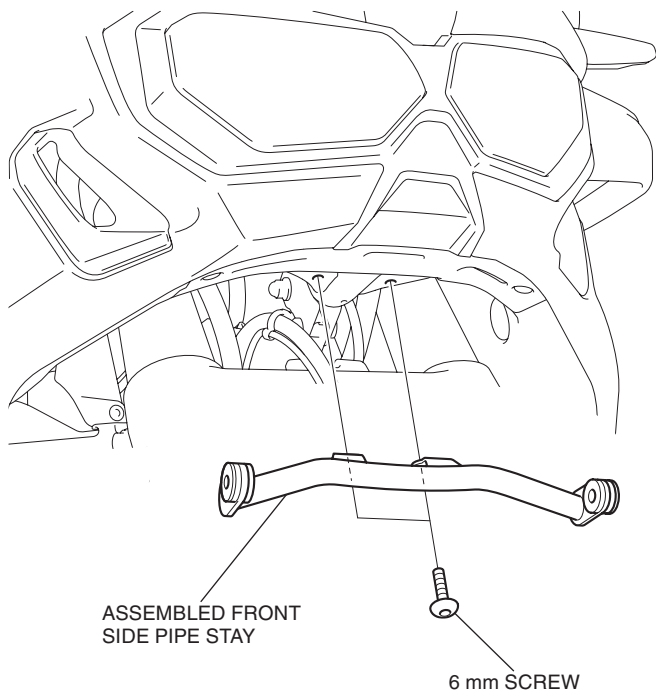
21. Install the cushions to the front side pipe stay as shown.



22. Install the flange collars (small) to the front side pipe stay as shown.

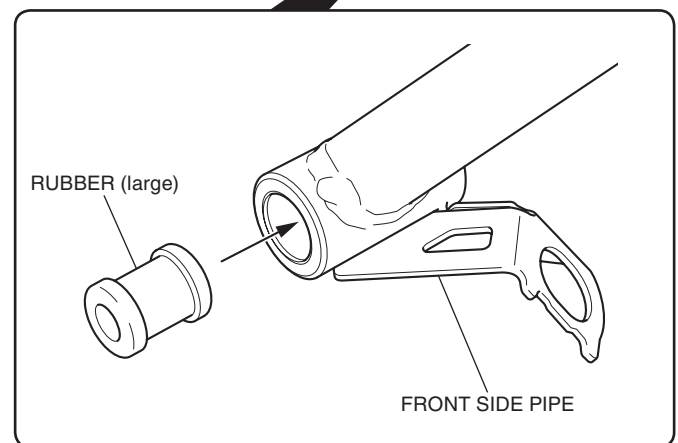
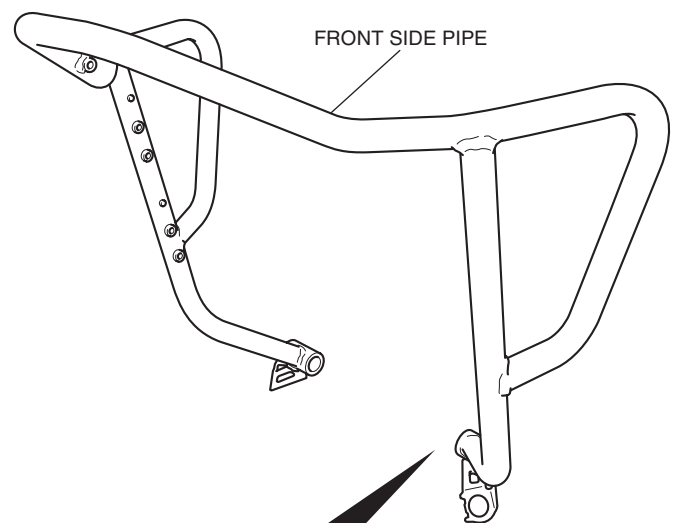


23. Loosely install the assembled front side pipe stay as shown.



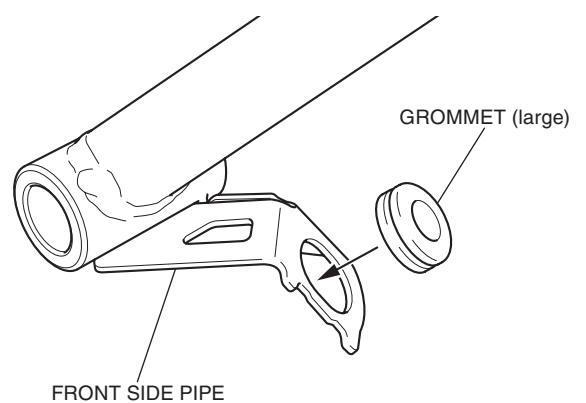
24. Install the rubber (large) as shown.

• Repeat on the right side.

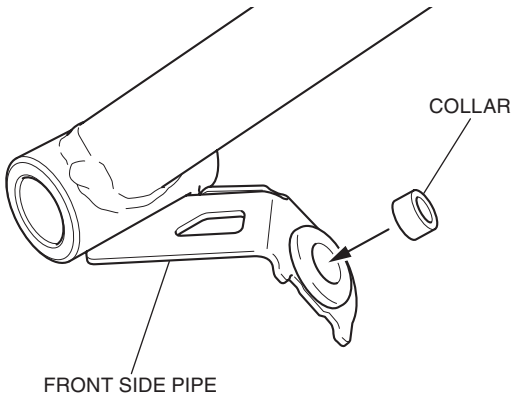


25. Install the grommet as shown.

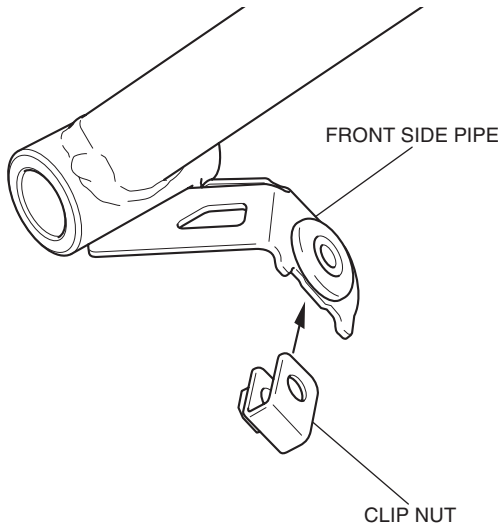
• Repeat on the right side.



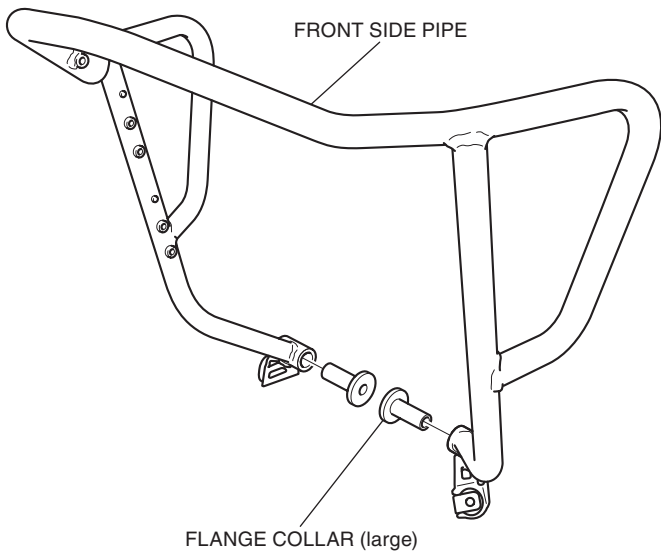
26. Install the collar as shown.
- Repeat on the right side.



27. Install the clip nut as shown.
- Repeat on the right side.

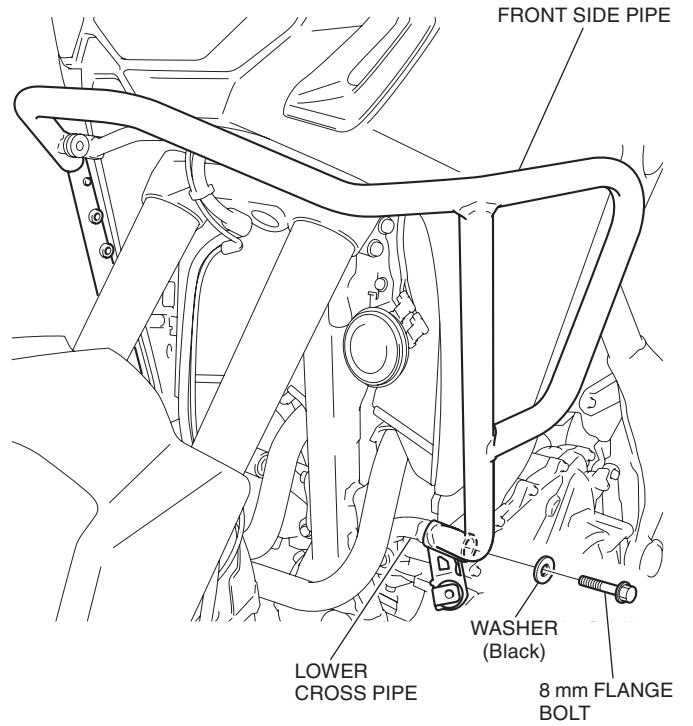


28. Install the flange collars (large) as shown.

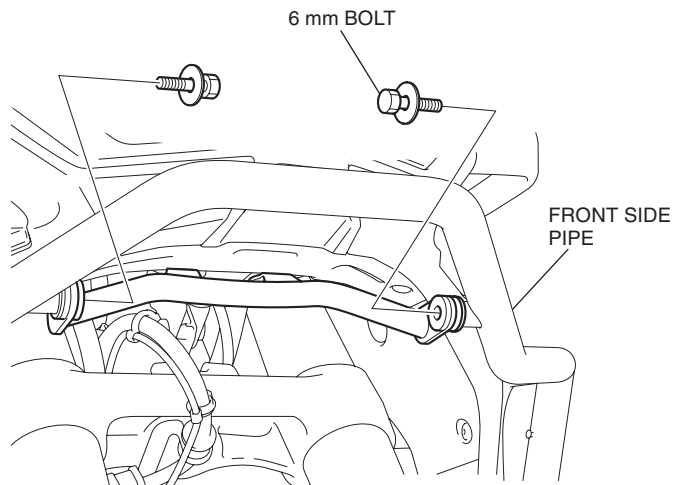


29. Loosely install the front side pipe as shown.
- Repeat on the right side.

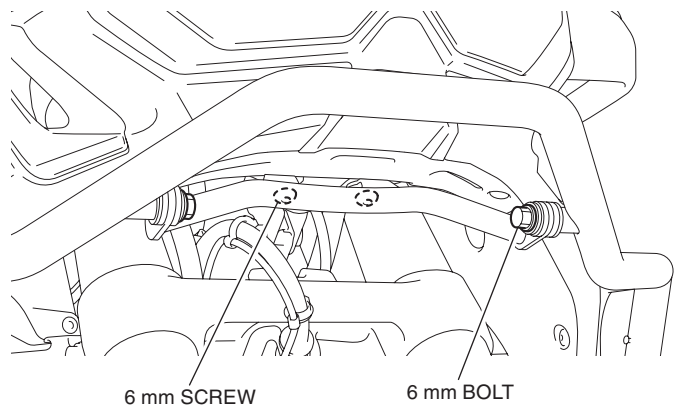
<Left side>



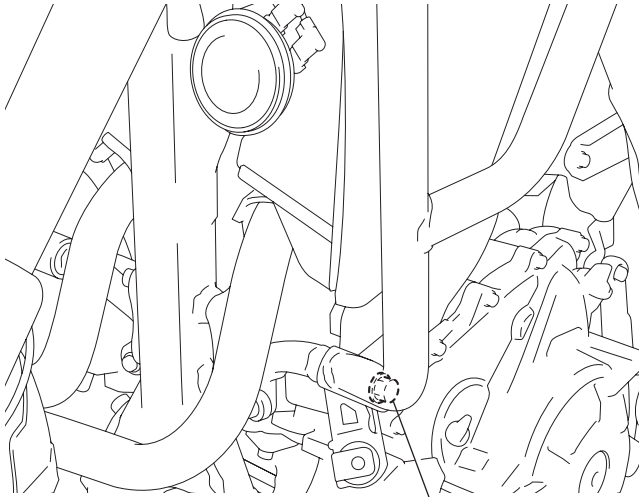
30. Loosely install the front side pipe as shown.



31. Securely tighten the 6 mm screws, and then tighten the 6 mm bolts.

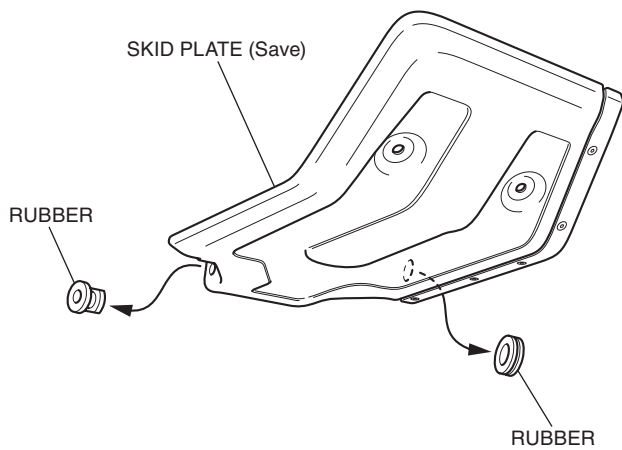


32. Securely tighten the 8 mm flange bolts as shown.

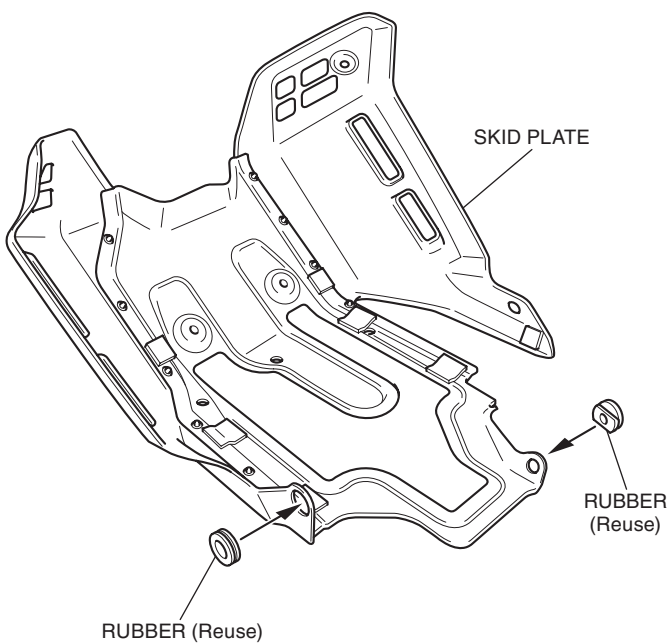


8 mm FLANGE BOLT  
Repeat on the right side.

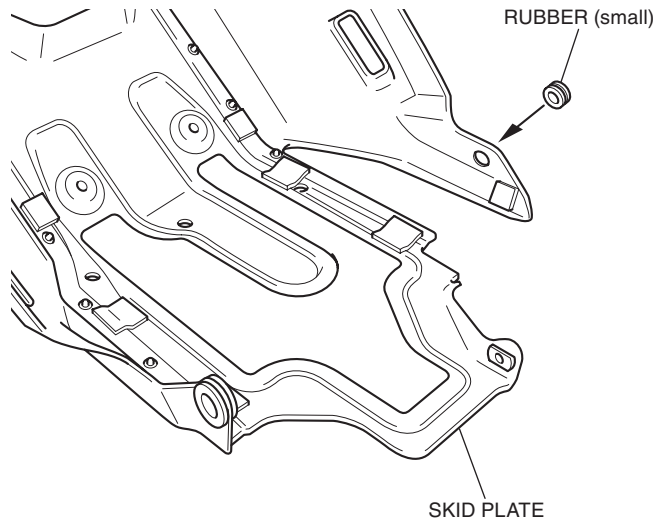
33. Remove the rubbers as shown.



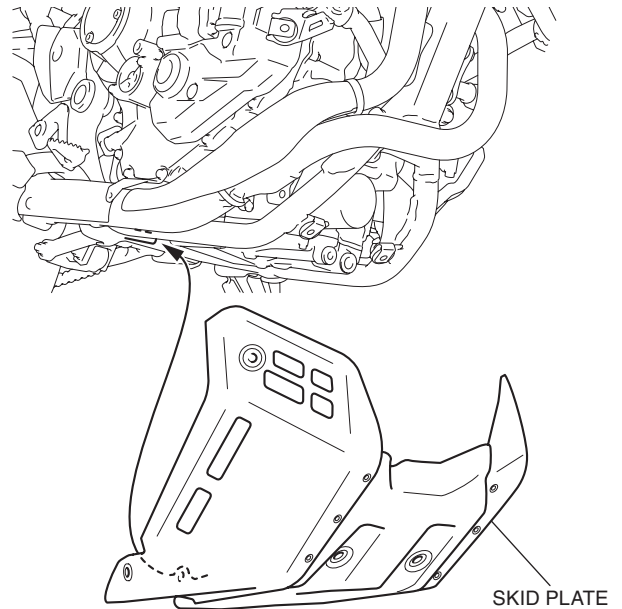
34. Install the rubbers as shown.



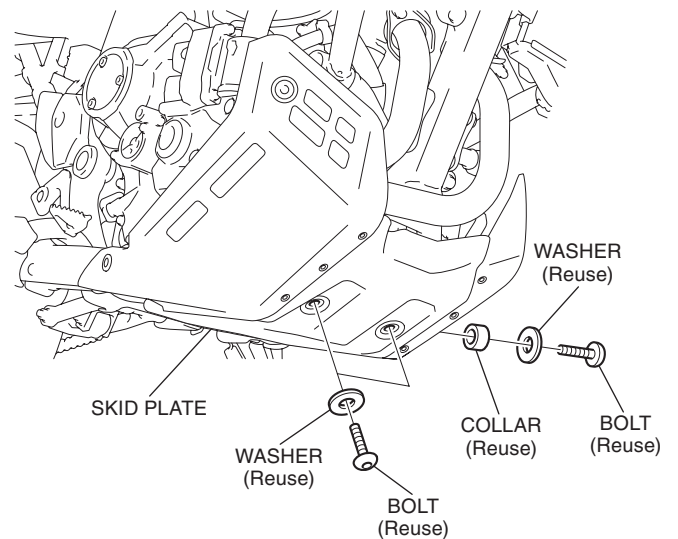
35. Install the rubber (small) as shown.



36. Install the skid plate as shown.

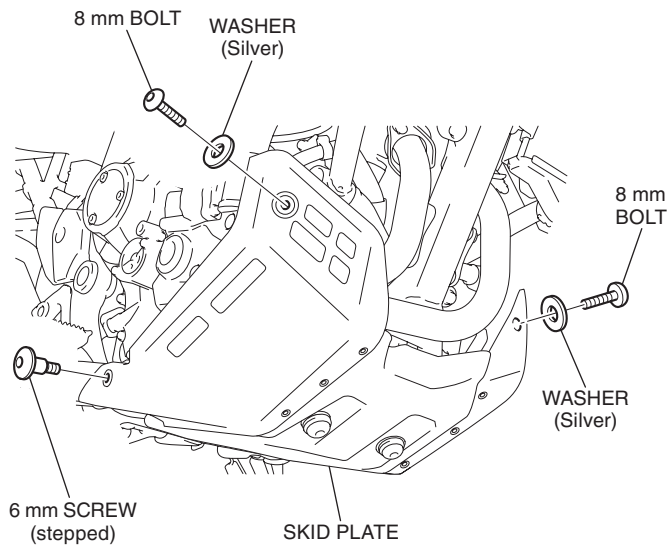


37. Install the parts as shown.





38. Install the parts as shown.



39. Install the motorcycle's parts in the reverse order of removal.