



---

## FITTING INSTRUCTIONS

---

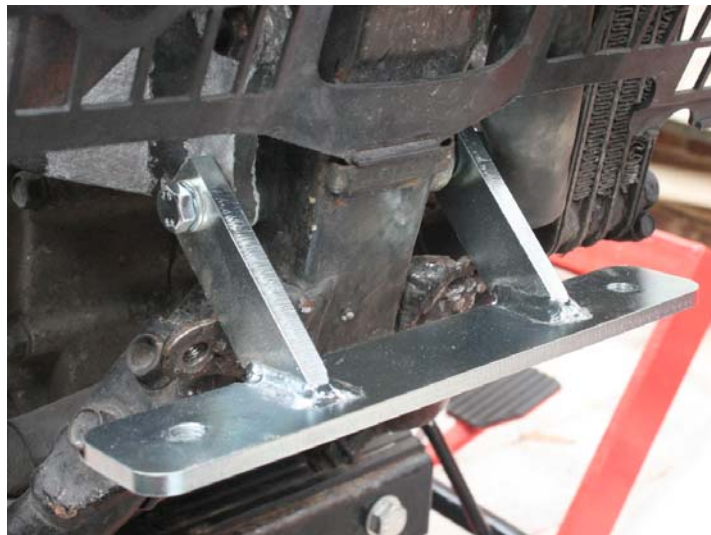
### Honda XRV750 Africa Twin (1993 >) – Rugged Roads Crashbars

#### Contents

1 x Left Hand Crashbar	1 x M10 x 140mm Rear Mount Bolt
1 x Right Hand Crashbar	2 x 33mm Spacers
1 x Lower Mount Bracket	2 x M10 Nyloc Nuts
1 x Upper Mount Bracket	2 x M10 Washers
1 x M8 U bolt	3 x M8 Nyloc Nuts
4 x M10 Countersunk Socket Bolts	4 x M8 Washers
1 x M8 x 110mm Lower Mount Bolt	

**IMPORTANT – EVERYTHING MUST BE ASSEMBLED LOOSELY AND ALIGNED CORRECTLY BEFORE TIGHTENING ANY BOLTS / NUTS.**

1. Remove Bashplate
2. Remove lower bolt from front engine mount bracket
3. Install lower bracket loosely using:
  - a. Lower Mount Bracket
  - b. M8 x 110mm Bolt
  - c. 2 x M8 Washers
  - d. 1 x M8 Nyloc Nut





---

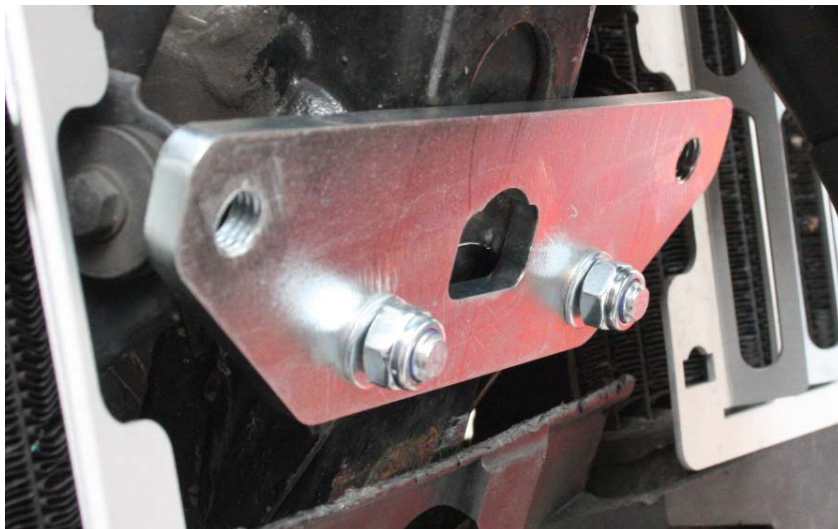
## FITTING INSTRUCTIONS

---

4. Insert the M8 U bolt behind main front downtube



5. Loosely mount upper mount bracket to the U bolt with the rear face marked BACK facing towards the rear of the bike using 2 x M8 Washers and M8 Nyloc Nuts.



6. Remove original rear engine mount bolt – do not lose the original Honda spacers that are on the inside of each side bracket.
7. Slide in new M10 x 140mm rear engine bolt – not forgetting to make sure you fit the original spacers back.



---

## FITTING INSTRUCTIONS

---

8. Slide the 33mm spacer on each side
9. Offer crashbar onto rear mount and install M10 washer and M10 Nyloc nut loosely.



10. Loosely install M10 Countersunk Socket Bolt through crashbars onto lower mount



11. Loosely install M10 Countersunk Socket Bolt through crashbars onto upper mount



12. Repeat for installing crash bars on opposite side.





---

## FITTING INSTRUCTIONS

---

13. **IMPORTANT** – All fixings must be loose before finally pushing up front lower bracket with crashbars loosely installed to get them mounted as high as possible so as not to foul the upper edge of the bashplate.
14. Once held in highest position, tighten up front fixings and rear fixings.
15. Refit bashplate

